

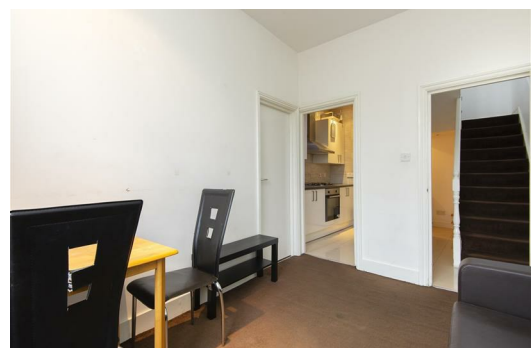


Burdett Road, London, , E3 4TN
£1,650 PCM

Elms Estates are pleased to bring to the market to Let this three bedroom split -level THREE double bedroom flat that offers a high specifications finish with a separate living space.

The property has three large bedrooms, modern bathroom and fully integrated separate kitchen. This flat is perfect for three professional sharers or students. The property is located within walking distance to Mile End station and Queen Mary University. You also have an excellent selection of amenities on offer with a range of shops, Restaurants and bars.

This property is not one to miss out on. Please call to arrange your viewing now.



Lounge
11'6" x 8'5" (3.53 x 2.57)

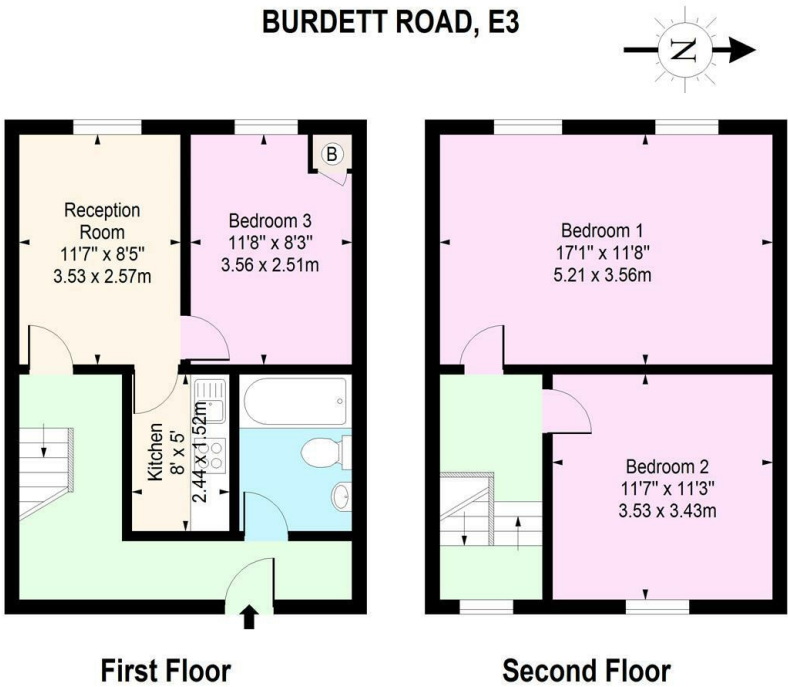
Kitchen
8'0" x 4'11" (2.44 x 1.52)

Bedroom One
17'1" x 11'8" (5.21 x 3.56)

Bedroom Two
11'6" x 11'3" (3.53 x 3.43)

Bedroom Three
11'8" x 8'2" (3.56 x 2.51)

Bathroom



Approx. Gross Internal Area 808 Sq Ft - 75.06 Sq M
For Illustrative Purposes Only - Not To Scale
www.laplus.com

Energy Efficiency Rating		Environmental Impact (CO ₂) Rating	
Current	Potential	Current	Potential
England & Wales		England & Wales	